

MICROMOUNTERS OF NEW ENGLAND NEWSLETTER

The MMNE was organized on November 8, 1966 for the purpose of promoting the study of minerals that require a microscope

No. 261

February, 2005

OFFICERS 2004-2005

President

Jim Cahoon
(978) 897-8221
jcahoon@
geochronlabs.com
cahooncj@aol.com

Vice-President

Bob Janules
(603) 424-9269
janules@worldnet.att.net

Treasurer

Anna Wilken
(603)-536-2013
microxl@mfire.com

Secretary

Bob Wilken
(603)-536-2013
microxl@mfire.com

Directors

Gene Bearss
(207) 324-3610

Bob Wilken
(603)-536-2013
microxl@mfire.com
2004-2005

Newsletter Editor

Mike Swanson
(413) 773-3867
msmicros@crocker.com

Next Meeting

Saturday, February 19
Chelmsford, MA library
Doors open at 9AM

Map and directions are on the back page

For information regarding
MEETING CANCELLATION
due to inclement weather,
contact President
Jim Cahoon at
(978) 897-8221 or
cahooncj@aol.com

MMNE Secretarial Report for November 20, 2004 Chelmsford Public Library

President Jim Cahoon brought the January Micromounters of New England meeting to order at 12:55 PM with fourteen members present. He recognized a new member, Nate Martin, was in attendance.

Those present moved and accepted the November 2004 minutes as published in the January MMNE Newsletter. A motion was also made to accept Treasurer Anna Wilken's report as presented, and this too was accepted by all.

Pat Barker reported that she had spoken to the editor of Rocks and Minerals. She said that the magazine's policy had not changed and that a list of donors as well as the individuals memorialized continue to be published each year in the April issue.

President Cahoon reported that the speaker recommended for the May Symposium had been contacted by Bob Janules, but no response was yet received. Bob would follow up on this matter.

Gene Bearss noted a significant number of "walk-ins" by the interested public during the course of the morning. He urged people to bring in pictures of minerals, specimens and items of mineralogical interest that might encourage them more. He questioned the whereabouts of a microscope donated by member Steven Cares. President Cahoon said it was in his possession and that he would make sure it would be available for use by children and other members of the public during monthly meetings.

President Cahoon initiated discussion regarding the issue of alternate meeting dates in the event of inclement winter weather. He said that Norm Biggart was willing to try to schedule them. Discussion followed that resulted in a consensus that such rescheduling was neither needed nor desired. Essentially there have been few club meeting cancellations over many years.

Pat Barker announced that she was reading Simon Winchester's book The Map That Changed the World: William Smith and the Birth of Modern Geology and that she highly recommended it to all. She indicated, however, that it was not "light reading".

Long-time member Janet Cares reported that she and her husband Steve would be moving out of the area within the next year and that they would have things of mineralogical interest to give away. Items mentioned were a balance scale, oxalic acid, and other chemicals.

Gene Bears made four other unrelated announcements: He first noted the passing of the Franklin Mineral Museum's curator, John Cianciulli. Second, he said that members should get items to Hal Herard for the May Symposium silent auction. Third, he urged members to take several boxes or flats of giveaways home to cull, organize and check labeling. Fourth, he said that the six door prizes at today's meeting were all Tiptop Mine specimens donated through the courtesy and generosity of Steven Cares. Door prize winners were Brian Porter, Bob Janules, Anna Wilken, Hal Herard, Gene Bearss and Jim Parella.

The meeting was adjourned at approximately 1:30 PM. Respectfully submitted, Bob Wilken, Secretary.

The **Newsletter** is the official publication of the Micromounters of New England (MMNE). The last by-laws revision was April 19, 2003. The MMNE is a member of the Eastern Federation of Mineralogical and Lapidary Societies (EFMLS) (<<http://www.amfed.org/efmls>>) and the American Federation of Mineralogical Societies (AFMS) (<http://www.amfed.org>). Material from the *Newsletter* may be copied in other rock and mineral publications if credit is given to the author and the *Newsletter* and permission has been obtained from the author. If there are questions regarding copying contact the editor. The club address is c/o the Secretary. Meetings are held monthly, September through May, except for December, and usually on an informal basis in July and August. Sites rotate and will be posted in the *Newsletter* as far in advance as possible. Visitors are welcome to attend all meetings. Bring a microscope and light source if you have one.

DUES are \$10/year for a single person and \$15/year for a family membership, levied on a calendar basis. The family membership includes two adults and all children under 18 living at the same address. One copy of the *Newsletter* will be sent on a family membership.

Officers for 2004-2005

President: Jim Cahoon, 31 Parker St., Maynard, MA 01754	(978) 897-8221	jcahoon@geochronlabs.com
Vice President: Bob Janules, 17 Woodard Rd., Merrimack, NH 03054	(603) 424-9269	janules@worldnet.att.net
Treasurer: Anna Wilken, 79 Meadow Lane, Campton, NH 03223	(603) 536-2013	microxl@mfire.com
Secretary: Bob Wilken (2003-4), 79 Meadow Lane, Campton, NH 03223	(603) 536-2013	microxl@mfire.com
Directors: Gene Bearss (2003-5), 33 North Avenue, Sanford, ME 04073-2943	(207) 324-3610	
Bob Wilken (2003-4), 79 Meadow Lane, Campton, NH 03223	(603) 536-2013	microxl@mfire.com

Editor:

Mike Swanson: 646 Greenfield Rd., Leyden, MA 01301-9400	(413) 773-3867	msmicros@crocker.com
---	----------------	--

2005 CALENDAR OF UPCOMING EVENTS

February

- 10-13 - Tucson Gem and Mineral Show, Tucson, AZ Convention Center
- 19 - MMNE meeting. Chelmsford, MA public library
- 25-26 - 4th Annual Southeast Micromounters Winter Gathering. Suwannee River Conference Center, Dowling Park, FL. Info: Ed Cunningham, PO Box 4341, Dowling Park, FL 32064; edmarc@atlantic.net.

March

- 26 - MMNE meeting. Chelmsford, MA public library

April 2005

- 1-3 - Atlantic Micromounters Conference sponsored by the Micromounters of the National Capitol Area. Contact Steve Weinberger at cweinber@bcpl.net.
- 14-17 - Rochester Mineralogical Symposium, Rochester, NY. Details to follow.
- 16 - MMNE meeting. Chelmsford, MA public library
- 30-May 1 - 42nd New England Gem & Mineral Show. North Shore Rock & Mineral Club. Topsfield Fairgrounds. Coolidge Hall & Trade Building, Topsfield, MA
- 31-May 1 - Maine Mineral Symposium. Details to follow.

May 2005

- 21 - MMNE Annual Symposium. Elks Lodge, Hudson, MA

TABLE OF CONTENTS

Page 1 - Secretary's Report

Page 2 - Masthead

Calendar of Upcoming Events

Page 3 - 4 "Minerals of the Conway Granite", part 9

Page 5 - International Directory of Micromounters now available
Mining the Internet - "Lithos" mineral cataloging program

Page 6 - Map and directions to Chelmsford, MA Library

A MICROMOUNTER EXPLORES NEW HAMPSHIRE'S CONWAY GRANITE, part 9**Collecting off the Kankamagus (continued)****by Bob Janules****janules@worldnet.att.net****PETER'S "WATER POCKET"**

After looking for several years without luck to find Peter Samuelson's pocket that had produced pyrochlore and fluocerite, I was finally able to locate it by the most direct way possible. I asked Peter where it was. He directed me to the opposite end of the campground from where Mike and I had started our search. It was only about a ten minute walk uphill to find it.

The pocket was a very deep water-filled hole covered by boards. The surrounding grout pile was not as extensive as I thought it would be for a pocket of this size. Peter told me other collectors have been there, so it may have been well picked over. I did find a thumbnail sized siderite rhomb as well as a few microminerals. Brown bi-pyramidal crystals of zircon were rather abundant growing on albite. Also abundant was zoned zinnwaldite as microcrystals and larger. One specimen featured what I believe to be goethite octahedrons after pyrite. On another specimen tan hexagonal tablets were growing on albite. These were earthy in texture, and likely were highly altered bastnasite crystals. The most interesting specimen I recovered was a cream colored resinous crystal about a millimeter in size with a dark brown coating. This may be fluocerite, but analysis is required to confirm this.

THE HAM BROOK LOCALITY

Mike Graham and I also explored some of the foothills on the south side of the Kankamagus further east towards Conway. Our bushwhacking brought us to one spot just west of Ham Brook that featured three thick veins of bull quartz that intersected. This coarse mineralization we saw as possible evidence of a nearby large pocket.

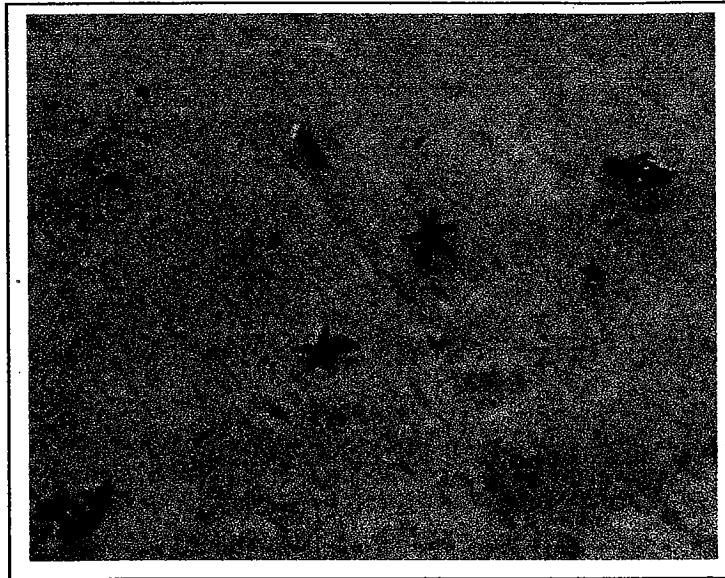
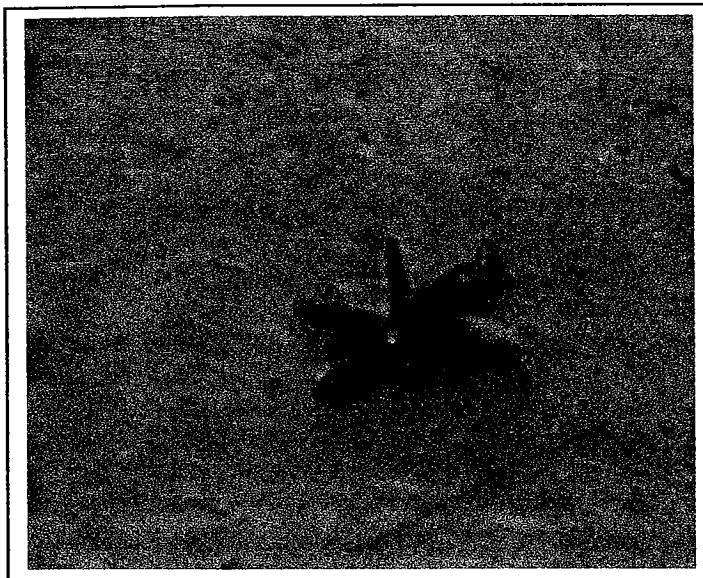
Several collectors worked this spot on a number of collecting trips, including human jackhammers Curt Laplante and Neil Santierre. Much rock was removed. Only one pocket, modest in size, was opened up. It was about the size of a basketball. All the quartz crystals in the pocket grew together on one part of the wall; most of the pocket content was blocky microcline. On the microcline were microcrystals of zircon as well as interesting twinned black crystals that resembled stars. With this twinning, I thought they might be rutile. I was surprised when analysis revealed they were columbite. Another find from this locality was fergusonite-(Y), as embedded reddish brown metamict crystals wholly embedded in the granite.

Our group abandoned this spot after several collecting trips proved unproductive. I suspect it still holds promise for those who are patient and hard working.

ED'S GENTHELVITE FIND

I can't leave a discussion on the Kankamagus without mentioning a remarkable find made by Ed Hakesley. Along the narrow strip of land between the Swift River and the highway, very near Rocky Gorge, Ed came upon a previously worked pocket. He recovered a few specimens that had gemmy cherry-red crystals growing on microcline. These had the shape of modified tetrahedrons. The best of these could easily be seen by the naked eye against a background of greenish microcline. Despite the deep red color these were shown by analysis to be genthelvite, not danalite. Scott Whittemore and I later checked out the pocket and the vuggy granite surrounding it, finding little. It was a very strange experience to be collecting at a Conway granite locality and having cars whiz past you.

NEXT: ON TO THE MOATS



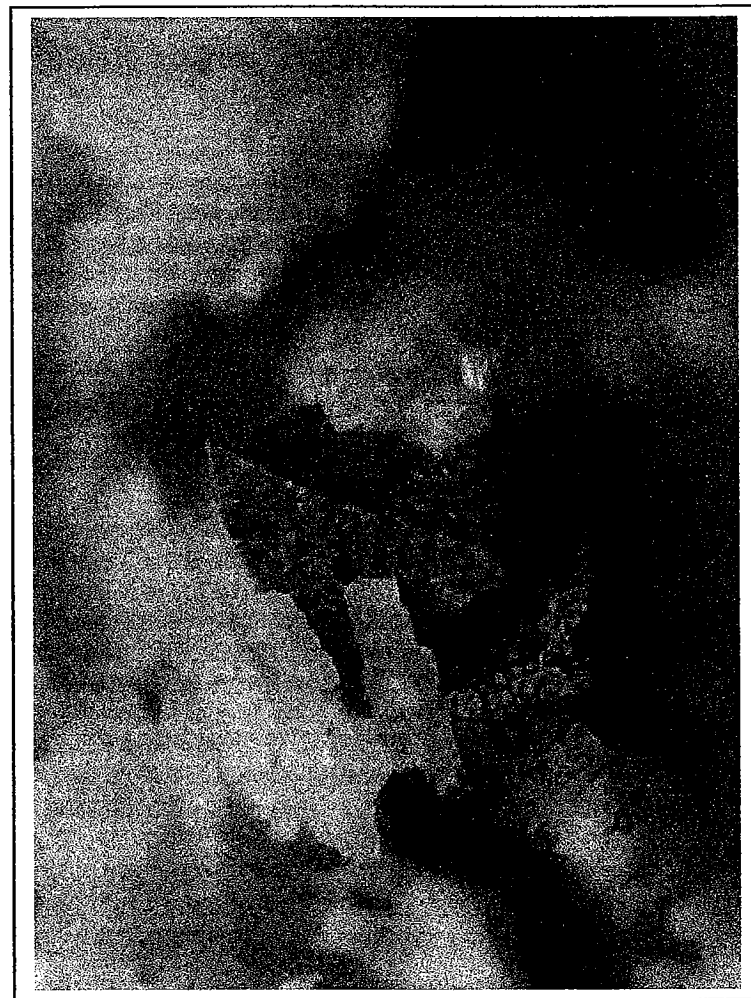
Photographs for "Corway Granite" part 9

Above (L & R) – Columbite "stars"
Haddam Brook Locality, Albany, NH

Below Right – Zircon with albite
Water Pocket, Blackberry Crossing, Albany, NH

Below – Genthelvite – Rocky Gorge, Albany, NH

All photographs by Bob Janules



INTERNATIONAL DIRECTORY OF MICROMOUNTERS 20TH EDITION Now Available

The Baltimore Mineral Society is pleased to announce the release of the 20th Edition of its International Directory of Micromounters. The cover price is \$6.00 per copy. Copies will be available at the Atlantic Micromounters Conference in April 2005 and at the Paul Desautels Memorial Micromount Symposium in October 2005, both held in Elkridge (Baltimore), MD. For addresses in the United States, the postpaid price is \$8.50 per copy. Payment by personal check or by money order is acceptable. Checks or money orders should be made payable to "Directory of Micromounters".

Orders must be addressed to the editor:
Carolyn Weinberger, PO Box 302, Glyndon, MD 21071-0302

Future editions depend on input from micromounters everywhere. Please send corrections, additions or, sadly, deletions to the editor at the address above or via e-mail <editor@amfed.org>.

MINING THE INTERNET

By Nate Martin, BMC News, December 2004 (with permission of the author)

I recently came across a free program for mineral collection cataloging. It is called "Lithos", and has been developed by some German collectors (Karl Günter Wunsch & Micaela Pantke). Below is my rewrite of the description that was on their website. I have downloaded the program and given it enough of a cursory examination to think it may be useful (but I have not completely checked it out to see how well it works.) Given how long it might take me to do that, I thought I should at least let you know that it exists. If you try it and develop some opinions about it (good or bad) please write a follow-up article to mine.

What is Lithos? Lithos is a software tool to keep track of your mineral collection. It is available for Windows 95/98/ME and Windows NT/2000. The current version is 2.3. It seems to be free for the downloading at <http://www.lithos-mineralien.de/>. The current version of Lithos offers the following features:

- An integrated database with all IMA acknowledges mineral species up to December 2000. The information for each species includes name, crystal system, crystal class, hardness, density, color, streak color, cleavage, fracture and crystal grid parameters.
- Links from over 1000 trade names, old or obsolete names, and mineral groups to the currently acknowledged species.
- Quick identification of mineral species based on physical properties with powerful search capabilities.
- Over 1000 crystal drawings of approximately 600 species.
- A database for your own collection. Keep track of the specimens in your collection and where they come from.
- Search facilities for your own collection that permit the following operations:
 - Listing localities from which you have a specific mineral species
 - Listing all specimens from a locality or region
 - Listing all specimens in a given storage space.
 - Of course, all of this only works after you have catalogued your collection using Lithos.
- Printing out labels using numerous formats.
- Note that whenever you need to enter a mineral name inside Lithos there is an assistant that helps to prevent casual spelling errors.

A full bilingual version of Lithos 2.3 (German & English) is available for download which consists of a single zipped file (**lithos2000.zip**) that is 886kb in size and unzips to create 13 files requiring a total of 3.56Mb of additional disc space. To install Lithos just unzip the file **lithos2000.zip** into a subdirectory and create a shortcut to the program **lithos_en.exe**. If you also want to try out the German language version create a shortcut to **lithos_de.exe**. (NB: I have not examined the program, Mike Swanson)

DIRECTIONS TO CHELMSFORD PUBLIC LIBRARY

From I-495 Northbound

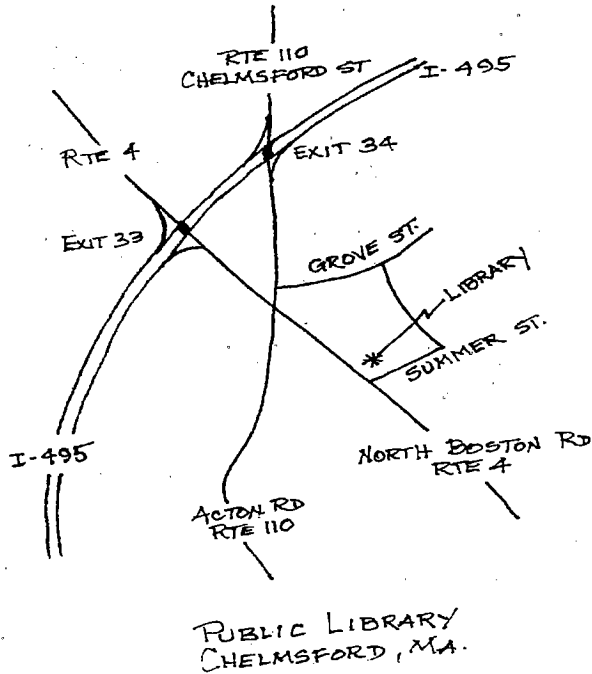
Take Exit 33 and turn right (South) at bottom of ramp onto Rte 4. Follow Rte 4 approximately ½ mile through several sets of lights to traffic island in center of town.

*Continue on Rte 4 to the right at the island and proceed past the Mobil station on your left (Note that you are on a one way street). The library is on the same island as the Mobil station. Continue on Rte 4 staying to the left for several hundred yards. The back side of the library is to your left. Take Rte 4 North, a left hand turn, and the library is the first building on the left. Park in the lot and enter through the front doors. The meeting room is to the right, just inside the entrance.

From I-495 South bound

Take exit 34 and turn right (South) at the bottom of the ramp onto Rte 110. Follow Rte 110 (Chelmsford Street) to junction of Rtes 110, 129, and 4. Go straight into Chelmsford Center, staying to the right of the Mobil station and follow directions from I-495 Northbound (*)

OR take Exit 33 and follow the directions from I-495 Northbound



Michael Swanson
Editor, MMNE Newsletter
646 Greenfield Road
Leyden, MA 01301-9400