

MICROMOUNTERS OF NEW ENGLAND NEWSLETTER

The MMNE was organized on November 8, 1966 for the purpose of promoting the study of minerals that require a microscope

No. 278

March, 2007

OFFICERS 2006-2007

President

Tom Mortimer
(603) 673-4039
tjmort@comcast.net

Vice-President

Mike Swanson
(413) 773-3867
msmicros@crocker.com

Treasurer

Anna Wilken
(603) 536-2013
microxl@mfire.com

Secretary

Bob Wilken
(603)-536-2013
microxl@mfire.com

Directors

Gene Bearss
(207) 324-3610

Gordon Jackson
(603) 783-4493
nhrockman@msn.com

Newsletter Editor

Etienne Médard
(617) 372-7706
emedard@mit.edu

Current Meeting

Saturday, March 17th
Nashua, NH library
Doors open at 9 am

Map and driving
directions are on page 6

Next Meeting

Saturday, April 21st
Location to be announced

For information regarding
MEETING CANCELLATION
due to inclement weather,
contact:
Tom Mortimer
(603) 673-4039
tjmort@comcast.net

The Continuing Search for MMNE Meeting Locations

by Tom Mortimer

Locating sites for our monthly MMNE meetings continues to be an ongoing problem. I am beginning to feel like a gypsy. Being a New England wide group, I sense a reluctance on the part of town libraries to provide more than a single meeting date to an organization that may have, at most, one member who is a resident of the hosting town. I am in agreement with Gene Bearss comment made at the February meeting that a preferred option is to locate a facility that would contractually agree, for a fee, to provide us with ten meeting dates for a calendar year.

Following many hours of searching by Norm Biggart and myself, I have made an executive decision to hold the March 17 meeting of the MMNE at the Theater Room of the Nashua Public Library, Nashua, NH. This room is spacious, well lit, with ample tables and chairs. The Nashua Mineral club has used this room for many years. (I have submitted the necessary forms to the library. As I stated at the February meeting, I will be in Florida on the 17th of March.)

Aside from the location being somewhat north of our preferred geographic center, this room does come with several restrictions, which I have pasted below from their room use agreement form.

- *Payment of dues, admission fees, or donations as a condition of attending a meeting is not allowed. No money may be exchanged in the library for any reason.*
- *No food or drink is permitted in any library meeting room.*
- *Meeting groups are responsible for setting up chairs and tables if necessary. All library space is to be left in a clean, neat and orderly condition.*

On the plus side, the advantages of the Nashua Library site include ample parking, and the preferred 9 am start time, (and tax free shopping for those who are dropped off by their spouse!)

Another meeting site I seriously considered for the March meeting was a room rental at the Radisson Inn, Chelmsford, MA. Through a "special favor" I was able to negotiate a room rental rate of \$75.00 for a 9 am to 1 pm meeting. The room is large with nice tables and cushy chairs. The big downside of the Radisson, (aside from it not being free), is that only beverage or food provided by the hotel is allowed.... And it is expensive.... Coffee/tea service for twelve would run about \$50.00. The fact that we couldn't enjoy our own cookies/cake/brownies & coffee pot at the Radisson is what pushed me to go for the Nashua Library where we can't have our goodies either, but at least the room is free. Perhaps if it is a (very) nice day, those wishing, could step outside to the benches in front of the library to enjoy a snack.

The **Newsletter** is the official publication of the Micromounters of New England (MMNE). The last by-laws revision was April 19, 2003. The MMNE is a member of the Eastern Federation of Mineralogical and Lapidary Societies (EFMLS) (<http://www.amfed.org/efmls>) and the American Federation of Mineralogical Societies (AFMS) (<http://www.amfed.org>). Material from the *Newsletter* may be copied in other rock and mineral publications if credit is given to the author and the *Newsletter* and permission has been obtained from the author. If there are questions regarding copying contact the editor. The club address is c/o the Secretary. Meetings are held monthly, September through May, except for December, and usually on an informal basis in July and August. Sites rotate and will be posted in the *Newsletter* as far in advance as possible. Visitors are welcome to attend all meetings. Bring a microscope and light source if you have one.

DUES are \$12/year for a single person and \$16/year for a family membership, levied on a calendar basis. The family membership includes two adults and all children under 18 living at the same address. One copy of the *Newsletter* will be sent on a family membership.

Officers for 2006-2007

President: Tom Mortimer, 3 Roberts Rd., Amherst, NH 03031	(603) 673-4039	tjmort@comcast.net
Vice President: Michael Swanson, 646 Greenfield Rd., Leyden, MA 01301-9400	(413) 773-3867	msmicros@crocker.com
Treasurer: Anna Wilken, 79 Meadow Lane, Campton, NH 03223	(603)536-2013	microxl@mfire.net
Secretary: Robert Wilken, 79 Meadow Lane, Campton, NH 03223	(603)536-2013	microxl@mfire.net
Directors:		
(2006-2008) Gene Bearss, 33 North Ave., Sanford, ME 04073-2943	(207) 324-3610	
(2006-2007) Gordon Jackson, PO Box 600, Canterbury, NH 03224-0600	(603) 783-4493	nhrockman@msn.com

Editor: Etienne Médard, 50 Meacham Rd., Somerville, MA 02144-2732

(617) 372-7706

emedard@mit.edu

Webmaster: Joseph Mulvey

(603) 880-4018

bassmeister_2000@yahoo.com

MMNE Website: <http://www.micromountersofnewengland.org>

2007 CALENDAR OF UPCOMING EVENTS

March 2007

- 17 – MMNE meeting, Nashua Public Library, doors open at 9 am; map and directions on page 6
- 24-25 – Old Westbury, NY: 35th annual show; Island Rock Hounds; Old Westbury High School, Post Rd. Sat. 10-5, Sun. 10-5; admission \$4.50; Nancy Colburn, (516) 334-4398; nileda55@yahoo.com.
- 31 – Mineral Madness, Boston Mineral Club and Harvard University, <http://www.hmnh.harvard.edu>

April 2007

- 15-16 – Annual show Maine Min. & Geol. Society; Univ. of New England gym, Stevens Ave. Portland ME; Sat 10-5, Sun 10-5; contact Sheryl Gandy, 513 Main St., Monmouth, ME 04259.
- 21 – MMNE meeting, location and date to be confirmed
- 28-29 – 35th annual show, Franklin-Ogdensburg Mineralogical Society, Franklin School, Washington Ave., Franklin NJ; Sat 9-5:30, Sun 10-5; Sterling Hill Mining Museum, (973) 209-7212

May 2007

- 5-6 – Topsfield, MA: 44th annual show; North Shore Rock & Mineral Club; Topsfield Fairgrounds, Rte. 1 N; Sat. 9-5, Sun. 10-4; contact Joe Weisberg, (781) 861-6653; Web site: www.nahant.com/nsrmc.
- 19 – MMNE May Meeting, Hudson, MA – doors open at 9:00 am (more information on page 7)
- 26-June 3 – Maine Pegmatite Symposium

TABLE OF CONTENTS

- Page 1 – The continuing search for MMNE meeting locations, *by Tom Mortimer*
- Page 2 – Masthead - Calendar of Upcoming Events
- Page 3 – MMNE secretarial report for 02/17/07, *by Bob Wilken*
- Page 4 – Halotrichite, a new species for New Hampshire, *by Tom Mortimer*
- Page 5 – Obituary: James Grandy, *by Bob Wilken*
- Page 6 – Website news, *from Joe Mulvey*
- Page 6 – Map and directions to Burlington, MA Public Library
+ March 2007 membership list and May meeting announcement

MMNE Secretarial report for 02/17/07

by Bob Wilken

President Tom Mortimer brought the Micromounters of New England February meeting to order at 12 noon. This was the first meeting held at the Billerica, MA public library.

No minutes for the January meeting were published in the February newsletter. Those interested in knowing what transpired at the January meeting may do so by going to the “Members Only” page of www.micromountersofnewengland.org to listen to the MP3 recording of the actual meeting.

The treasurer, Anna Wilken, noted the treasury balance and indicated that she has paid the club EFMLS dues for the year. She also said dues are coming in but that **some sizeable number of members had yet to pay.** Those who have not paid will not receive the March newsletter. Joe Mulvey said that as of March he will change the password for the “Members Only” website page.

Anna Wilken reported that she had received a note from Jim Grandy’s wife saying that Jim had died suddenly early in January. Anna Wilken said she would send a donation to the “Rocks and Minerals” color fund on behalf of the club to commemorate Jim’s contributions to the club and his love of micromounting.

Bulletin Editor, Etienne Médard, said he needed articles for the newsletter and encouraged members to contribute. He said that for lack of member articles he had published an article from the French micromounting journal (“Cahier des Micromonteurs”) with permission from the authors. Other members suggested they could look for articles imported from other sources when needed.

Tom Mortimer reported that he had tried to contact and confirms Jim Nizamoff’s commitment to speak at the MMNE Grand May Meeting. He said he had gotten no response and that he would follow up on it again. *[since the meeting, Tom got a confirmation from Jim Nizamoff – see May meeting announcement on page 9].*

Tom also announced that Bob Whitmore had a mineral display at the Audubon Center on Silk Hill Road in Concord, NH.

Norm Biggart reported that both Chelmsford and Billerica Libraries were not available for the March meeting. He would look into Burlington and Auburn. Norm said he would look into the cost of tables as a donation to Billerica Library. There was some skepticism expressed that gifts to the library would not guarantee it as a dependable meeting location. *[the March meeting will be at the Nashua, NH, library – see directions on page 6]*

Hal Herard said sales material and giveaway material are needed for the May Meeting. He also requested that donated sales material be kept in groups of \$1, \$2, et al so he does not have to look at every one to evaluate them for pricing.

The meeting was adjourned at approximately 12:55 PM.

Respectfully submitted,
Bob Wilken, Secretary.

Halotrichite, a New Species for New Hampshire

by Tom Mortimer

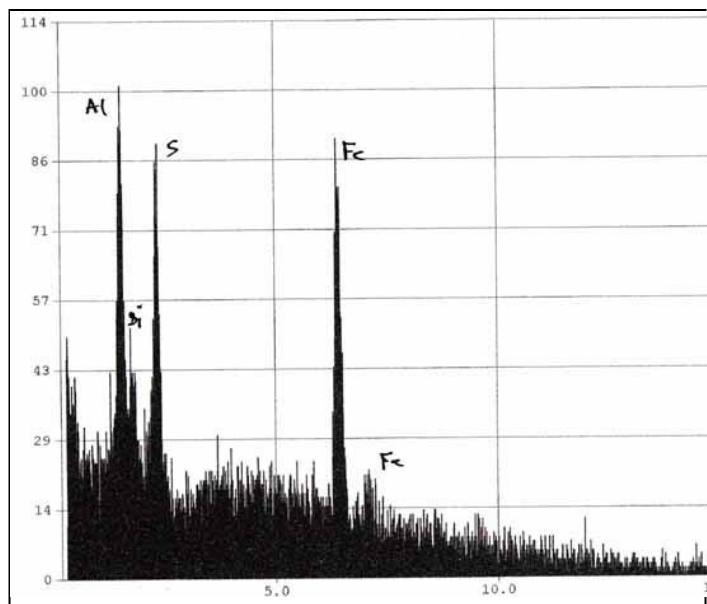
One of the New Hampshire localities I visited in August of 2005 was the “Old Gold Mine” on the Beebe River in Campton, New Hampshire. My motivation for visiting this site was to try and obtain a specimen of Tetrahedrite, the Antimony Sulfide. This is a Phillip Morrill locality. The reported species are magnetite crystals, pyrite and tetrahedrite. Morrill states: the “Old “Gold” Mine, accessible only by wading. Tunnel at falls Beebe River in cliff.” I choose August to visit this locality, hoping that the water level would be low. This was a good decision, as I was able to cross the river at the desired point, stepping from boulder to boulder, not needing to remove my boots. As I walked up the riverbank from my roadside parking spot, I noted several quartz-sulfide boulders in the river bed. I broke up a few of these finding galena and pyrite, but found nothing worthy of putting in my pack-pack. I did not see a tunnel at the spot indicated by Morrill, but there was a 60 to 80 foot rock cliff with a decomposing sulfide zone running from the top of the cliff to the river surface. Many large boulders had fallen down this zone. More are likely to follow... adding some risk to mineral collecting at this spot! My guess was that the rock-slides had covered over the tunnel entrance. Figuring that this was the right spot, I set about sampling the decomposing sulfide boulders. There was a modest amount of massive, crumbling pyrite. I did find a few pieces of a white matrix material with soft gray amorphous mineral blebs. I figured this might be the Tetrahedrite, but badly weathered. I also found one piece of a green-gray bladed mineral, which I thought might be Clinozoisite.

As a New Hampshire species collector, my most interesting find was several pieces of a white, frosty, crusty mineral on the protected underside of a large sulfide boulder. I thought this might be Pickeringite. Although this is not a particularly exciting mineral, as far as aesthetics go, I am not aware of any previous reportings of this species in New Hampshire.



*White, frosty, crusty,
mineral from Beebe River
bank. Photo view field
about 1.5 inch by 1 inch.*

In the fall of 2006 I had an EDS analysis performed on the three Beebe River locality minerals described above. My “soft gray amorphous mineral blebs”, thought to be Tetrahedrite, turned out to be Gypsum, apparently with some trace accessory mineral providing the gray coloration to this normally white species. My green-gray bladed mineral analyzed to be Actinolite, not Clinzoisite. I have seen quite a bit of Actinolite, and was a little surprised with this finding, as this Beebe River material is much paler than the usually dark green color for this species.



The EDS spectrum, to the left, for the white, crusty mineral indicated an Iron Aluminum Sulfur species.

Halotrichite, $\text{Fe}^{2+}\text{Al}_2(\text{SO}_4)_4 \cdot 22\text{H}_2\text{O}$, is the obvious match for this mineral in this environment. Halotrichite is water-soluble. The identification clincher was my observation that a lump of this mineral easily dissolves in warm water. (Pickeringite is a close cousin of Halotrichite. It is a Magnesium Aluminum Sulfur mineral).

I suspect that the Halotrichite at this locality dissolves away every spring and is replenishes in the dryer summer months! So if you want to collect this New Hampshire species, plan your trip for July-August. Examine the protected underside of sulfide boulders in the slide zone to find it.

With sadness

It is with sadness that we inform the MMNE membership of the death of **Jim Grandy**. His wife Ruth notified the club Treasurer that Jim died suddenly at home in early January. Jim was a long-time MMNE member. He would often head up the Connecticut contingent of micromounters making the long trek from Hamden, CT to the distant Massachusetts meetings. In more recent years, Jim and Ruth settled in Westminster, VT where Jim continued to maintain his interest in minerals and micromineral after retirement and up until his death. In spite of health problems Jim was frequently seen at the Sunapee mineral show. He will be missed.

From the editor

Tom Mortimer brought to my attention that a fair number of people were missing their mailed newsletters, or received bits and pieces of shredded paper. If other people have had troubles, please let me know so that I can try to figure out what I am doing wrong. On another note, club member Jim Parella brought to my attention some web links that may be of interest to the membership:

How to convert a microscope eyepiece into a spectroscope:

<http://www.modernmicroscopy.com/main.asp?article=8>

Survey on the aging population in the mineral collecting hobby:

<http://www.tomaszewski.net/Kreigh/Minerals/MineralLinks.shtml>



Yet another good reason to collect micros!

This photo was found under the Mining Disasters link on the Micromounters of New England "Links" web page.

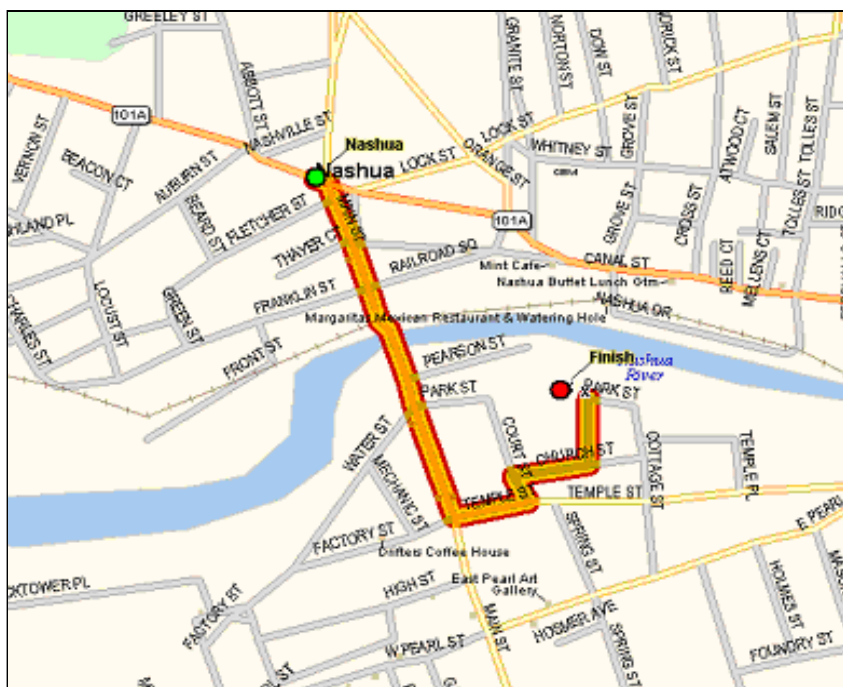
Did you know that most of our newsletters are available online in the Members Area?

The "Articles" section of the MMNE website also contains a large selection of online books. This includes a lot of old books (for example, the 4th edition of Dana's System of Mineralogy) and some local favorites like:

- ✂ Beryl Resources of New Hampshire
- ✂ Davis Mine, Rowe, MA
- ✂ Fluorite Deposits of Cheshire County, NH
- ✂ Geology of New Hampshire volume #1, #2 and #3
- ✂ Gilsum - S. Acworth - Beryl Mountain
- ✂ Nationwide Mineral Collecting Localities part 1 of 3
- ✂ Nationwide Mineral Collecting Localities part 2 of 3
- ✂ Nationwide Mineral Collecting Localities part 3 of 3
- ✂ Microscopic determination of the non-opaque minerals

Latest website news

from our webmaster Joe Mulvey



Directions to the Nashua, NH Public Library: Take exit 7 off Rt 3 Nashua onto Rt 101A East, (towards Nashua). Travel east on Rt 101A for 1.5 miles to stop light, Main St. Nashua, (the green dot below, you will pass at least 4 stop lights along the way.). Take a Right onto Main St, go over Nashua River, and take a left at 3rd stop light onto Temple St. Take first left onto Court St., then Right onto Church St for short distance to corner then left into library parking lot. Walk up paved walkway to main library entrance. Theater room is downstairs, an immediate right after entering the library. At bottom of stairs, theater room is through double doors on right.

MMNE MAY MEETING ADVANCE NOTICE

Our Annual Reunion Meeting will be held on Saturday, May 19, 2007 at the Elk's Lodge in Hudson, MA. The meeting starts at 9:00 am. If you can come earlier to help set up tables, etc. it will be appreciated.

We need specimens for the sales table. Please bring your donations to the March or April meeting for color coding. If you are not able to attend any of these meetings please label all sales items with either a priced sticker or price code dot (yellow/\$ 1, red/\$2, green/\$3, blue or silver/\$4, orange or gold/\$5). Any item over \$5 needs a price marked on it. We are very pressed for time in the morning and there will not be time for anyone to price specimens, although colored dots can be applied if the specimens are grouped by price.

The more that can be done before May 20th the less confusion and stress on the day and we can all have fun.

Please remember: Your registration fee covers only part of our operating expenses – your donations cover the rest. If you have any questions regarding giv-a-way or sales items, please contact Hal Herard – phone 508-755-5947 or e-mail: hherard1@rcn.com.

All reservations includes lunch and must be in the treasurer's hands before May 13th. Walk-ins can pay at the door, but extra meals may not be available. Please fill out the Registration Form as soon as possible.

SPEAKER PRESENTATION

James Nizamoff will be the featured speaker at the Grand May Meeting of the Micromounters of New England on Saturday, May 19.

His presentation will focus on the pegmatology and mineralogy of the Palermo 1 & 2 Mines. The professional in geological sciences as well as to the mineral collector alike knows Jim. He started as a mineral collector at age seven in Putnam, Connecticut and went on to earn his Master of Science in Geology from the University of New Orleans. One of his prime research interests has been phosphate mineralogy and paragenesis of granitic pegmatites around the world. In the course of his academic career he has given innumerable oral presentations at the Rochester Symposia with many of them (as well as others) published in *Rocks and Minerals* and *The Mineralogical Record*. Jim has had wide ranging field experience from the Maine Pegmatite Camp, to work in Madagascar and field work in Namibia, Brazil and across the United States. He is currently working as a mineralogist for Omya, Inc. in Vermont.

REGISTRATION FORM

REGISTRATION FEE: Members \$20, Non-members \$25

Make checks payable to: Micromounters of New England (MMNE)

Return to: Anna Wilken

79 Meadow Lane, Campton, NH 03223

Name(s) _____ **@ \$20 each**

Name(s) _____ **@ \$25 each** _____

Address: _____

**Please return by May 13th, 2006, the closing date for ordering a meal.
48 hours notice is required for cancellation with refund.**

MMNE Membership List March 2007							
Last Name	First Name	Address #1	City	State	Postal Code	Home Phone	e-Mail address
Anderson	John & Susan	17 Ginley Road	Walpole	MA	02081	(508) 668-2008	jranders@erols.com
Barker	Patricia	PO Box 810	Campton	NH	03223-0810	(603) 536-2401	barker@eagle1st.com
Bears	Gene	33 North Avenue	Sanford	ME	04073-2943	(207) 324-3610	
Biggart	Norman B.	4 Baron Park Lane, Apt. 1	Burlington	MA	01803-5431	(781) 272-1537	normviking@verizon.net
Bonney	Steve	100 Dusty Rd.	Morehead	KY	40351	(606) 780-4810	sbonney@mis.net
Cares	Janet W.	88 Masonic Home Rd, Apt H-108	Charlton	MA	01507		
Champlain	Richard	15 Burr Rd.	Old Lyme	CT	06371-1103	(860) 434-5902	
Christofono	Peter	37 Wareham St	Medford	MA	02155	(617) 852-9133	pc28@thecia.net
Davidson	Scott	44 Tillson Road	Monmouth	ME	04259	(207) 933-3517	davidson@fairpoint.net
Dodge	Marilyn F.	534 Salem St. No12	Wakefield	MA	01880	(781) 224-7326	assoc9069@comcast.com
Ebner, Jr.	John C.	PO Box 1169	Wall Township	NJ	07719-1169	(732) 681-3451	jcebnerjr@optonline.net
Elvin	Al	256 Jackson Pines Rd.	Jackson	NJ	08527	(732) 961-3703	al-lauren-lucie@att.net
Fielding	Herbert L.	711 Blueberry Circle	Middleboro	MA	02346-5314	(508) 946-4810	hlfielding7825@comcast.net
Gristani	Carlos	12 Jambard Road	Hollis	NH	03049	(603) 465-6292	carlosg@charter.net
Hakesley	Edward	821-1 Alexis Circle	Mountain Home	AR	72653	(870) 424-0956	edscamp3@yahoo.com
Henderson, Jr.	William A.	47 Robin Ridge Drive	Madison	CT	06443-2044	(203) 245-0489	willhenderson@cshore.com
Herard	Harold	2 Betty Street	Auburn	MA	01501-3100	(508) 755-5947	hherard1@rcn.com
Hitchings	Marge	10 Church Street	Saugus	MA	01906-2474	(781) 233-4968	
Hubley	Anita & Christopher	90 Valley View Drive	South Windsor	CT	06074-2829	(860) 644-9600	hubley264@cox.net
Hutchins	P. Michael	911 North Road	Carlisle	MA	01741-1220	(978) 287 4723	michael-hutchins@alum.mit.edu
Jackson	Gordon & Pamela	PO Box 600	Canterbury	NH	03224-0600	(603) 783-4493	gsj8544@aol.com
Jewel	Dana & Inge	100 Lynn Fells Parkway	Melrose	MA	02176-2610	(781) 665 2756	
Kieron	Michael W.	38 Merritt Road	Riverside	RI	02915-3805	(401) 419-1209	mikekieron@cox.net
Leighton	Phyllis	10 Templeton Road	Phillipston	MA	01331-9794	(978) 249-4267	
Lepage	Ronald	37 May Street	Waterville	ME	04901	(207) 873-6270	ronlep@midmaine.com
Lockwood	Priscilla	711 Blueberry Circle	Middleboro	MA	02346-5314	(508) 946-4810	
Martin	Nathan C	8 Elena Road	Lexington	MA	02421	(781) 674-0017	rocknate@gmail.com
Médard	Etienne	50 Meacham Road	Somerville	MA	02144	(617) 253-2876	emedard@mit.edu
Morrison	Frances & George	182 Pine Street	Pawtucket	RI	02680-3918	(401) 726-2931	
Mortimer	Tom	3 Roberts Road	Amherst	NH	03031	(603) 673-4039	tjmort@aol.com

MMNE Membership List March 2007							
Last Name	First Name	Address #1	City	State	Postal Code	Home Phone	e-Mail address
Mulvey	Joseph	24 Skyline Drive	Nashua	NH	03062-3516	(603) 880-4018	bassmeister-2000@yahoo.com
Parella	James E.	35 1/2 Ellsworth Street	Worcester	MA	01610	(508) 363-2388	jeparella@cs.com
Partington	Phillip T.	5055 S. San Paulo Ave.	Sierra Vista	AZ	85650-9352	(520) 803-0656	rockhoundaz@wmconnect.com
Pershken	Richard	150 Surry Drive	Bristol	CT	06010-7621	(860) 583-3909	
Pomper	Sidney	27 Bowdoin St. Unit 4CD	Boston	MA	02114-4218	(617) 253-4676	rskrock2000@aol.com
Porro	Meredith	55 Bulfinch St.	Lynn	MA	01904		senarmontite@comcast.net
Porter	Brian	355 Walsh Ave.	Newington	CT	06111-3542	(860) 666-4505	port0202@cox.net
Rambo	George & Doug	P.O. Box 126	Claymont	DE	19703	(302) 798-4163	drambo417@comcast.net
Reutlinger	Steve	PO Box 397	Greenfield	NH	03047-0039	(603) 547-6416	sjrprime@aol.com
Rolph	Sarah						pmh232@yahoo.com
Sevrens	Betty	PO Box 397	Plymouth	NH	03264-0397	(603) 536-2050	
Stenberg	Richard	185 Redlands Street	Springfield	MA	01104-2912	(413) 733-9309	
Stewart	Margaret & John	90 Hayden Rd	Groton	MA	01450	(978) 692-2737	
Swanson	Michael	646 Greenfield Road	Leyden	MA	01301-9400	(413) 773-3867	msmicros@crocker.com
Taparowsky	Elizabeth	404 Westford Drive	Southport	CT	06890-1479	(203) 254-2505	
Whitmore	Robert	934 S. Stark Hwy.	Weare	NH	03281	(603) 529-2621	
Wilken	Anna & Robert	79 Meadow Lane	Campton	NH	03223	(603) 536-2013	microxl@mfire.net

REGARDING YOUR MEMBERSHIP LIST

The MMNE by-laws specify that the information on your MMNE Membership List may not be shared with anyone other than an active (paid up or life) member of the MMNE.

Note: if you are not on this list, it might be that you have not yet paid your 2007 dues - or that your editor messed up with his Excel file.