

## MICROMOUNTERS OF NEW ENGLAND NEWSLETTER

*The MMNE was organized on November 8, 1966 for the purpose of promoting the study of minerals that require a microscope*

No. 290

Sept, 2008

### **OFFICERS 2007-2008**

#### **President**

Joseph Mulvey  
(603) 880-4018  
bassmeister\_2000@yahoo.com

#### **Vice-President**

Gordon Jackson  
(603) 783-4493  
[gsj8544@aol.com](mailto:gsj8544@aol.com)

#### **Treasurer**

Anna Wilken  
(603) 536-2013  
microxl@mfire.com

#### **Secretary**

Bob Wilken  
(603) 536-2013  
microxl@mfire.com

#### **Director**

Gene Bearss  
(207) 324-3610

### **Welcome back! -- Joe Mulvey**

After a long summer of collecting minerals in the field or simply viewing them under a microscope in the air conditioned humidity controlled climate of your home, the Micromounters of New England are about to begin the 2008-2009 club meeting season.

### **Next Meeting:**

Saturday, Sept 20, 2008

- Focus on Connecticut Micros
- Video on Mineral Identification
- Assign responsibilities for May Symposium

So, please bring along a suite of some of your favorite Connecticut micro specimens to share with others at the September MMNE meeting.

## **FALL 2008 MEETING SCHEDULE**

We have arranged for the continued use of our room at the Trinity Lutheran Church, Chelmsford, MA for the remainder of 2008. Our fall 2008 schedule is as follows:

### **October – 10/18/2008**

- ◆ Focus on Mont St Hilaire
- ◆ Meeting will be held by Gordon Jackson (Joe Mulvey unable to attend)

### **November – 11/15/2008**

- ◆ Focus on Palermo
- ◆ Can we get Bob Whitmore to talk about Palermo?
- ◆ Video on Palermo

### **December – 12/20/2008**

We don't normally have a December meeting but if there is interest, the room is already booked.

### **Newsletter Editor**

Tom Mortimer  
(603) 673-4039  
tjmort@comcast.net

### **Current Meeting**

Saturday, Sept 20<sup>th</sup>  
Trinity Lutheran Church  
Chelmsford, MA  
Doors open at 9 am

Map and driving  
directions are on page 8

### **Next Meeting**

Saturday, October 18<sup>th</sup>  
Trinity Lutheran Church  
Chelmsford, MA

For information regarding  
**MEETING CANCELLATION**  
due to inclement weather,  
Joseph Mulvey  
(603) 880-4018  
bassmeister\_2000@yahoo.com

The **Newsletter** is the official publication of the Micromounters of New England (MMNE). The last by-laws revision was April 19, 2003. The MMNE is a member of the Eastern Federation of Mineralogical and Lapidary Societies (EFMLS) (<http://www.amfed.org/efmls>) and the American Federation of Mineralogical Societies (AFMS) (<http://www.amfed.org>). Material from the *Newsletter* may be copied in other rock and mineral publications if credit is given to the author and the *Newsletter* and permission has been obtained from the author. If there are questions regarding copying contact the editor. The club address is c/o the Secretary. Meetings are held monthly, September through May, except for December, and usually on an informal basis in July. Meeting sites may change and will be posted in the *Newsletter* as far in advance as possible. Visitors are welcome to attend all meetings. Bring a microscope and light source if you have one.

**DUES** are \$12/year for a single person and \$15/year for a family membership, levied on a calendar basis. The family membership includes two adults and all children under 18 living at the same address. One copy of the *Newsletter* will be sent on a family membership.

#### Officers for 2007-2008

President: Joseph Mulvey 24 Skyline Drive Nashua, NH 03062-3516  
 Vice President: Gordon Jackson, PO Box 600, Canterbury, NH 03224-0600  
 Treasurer: Anna Wilken, 79 Meadow Lane, Campton, NH 03223  
 Secretary: Robert Wilken, 79 Meadow Lane, Campton, NH 03223

(603) 880-4018

(603) 783-4493

(603) 536-2013

(603) 536-2013

[bassmeister\\_2000@yahoo.com](mailto:bassmeister_2000@yahoo.com)

[gsj8544@aol.com](mailto:gsj8544@aol.com)

[microxl@mfire.net](mailto:microxl@mfire.net)

[microxl@mfire.net](mailto:microxl@mfire.net)

#### Director:

(2006-2008) Gene Bearss, 33 North Ave., Sanford, ME 04073-2943

(207) 324-3610

**Editor:** Tom Mortimer, 3 Roberts Rd., Amherst, NH 03031

(603) 673-4039

[tjmort@comcast.net](mailto:tjmort@comcast.net)

**Webmaster:** Joseph Mulvey 24 Skyline Drive Nashua, NH 03062-3516

(603) 880-4018

[bassmeister\\_2000@yahoo.com](mailto:bassmeister_2000@yahoo.com)

**MMNE Website:** <http://www.micromountersofnewengland.org>

## 2008 Symposium - Joe Mulvey

I thought the May Symposium was a wonderful success. We had people attend from as far away as Virginia. Bill Henderson's three talks and slide shows were superb. His knowledge of history gave even more value to the localities as well as the mineralogy. Bill's presentations were videotaped and I am trying to get them loaded into the member's area. I am having some technical difficulties with audio but expect they will be resolved soon.

From a financial standpoint, we just about broke even. While we are a non-profit club, making a little money to allow us to purchase items is certainly needed. It has been mentioned that maybe the Hudson Elks is a bit off the beaten path for some. If you have an idea of a better alternate locality please bring it forward!



Michael Swanson presents lifetime member award to Bill Henderson at 2008 Symposium

## TABLE OF CONTENTS

Page 1	– September 2008 MMNE announcements.
Page 2	– Masthead 2008 Symposium report
Page 3	– MMNE Activities Update – Joe Mulvey
Page 4	– MMNE Activities Update -- continued
Page 5	– MMNE web site statistics update, Fall 2008 Mineral show schedule
Page 6	– Micromineral Collecting in Greater Nashua
Page 7	– Micromineral Collecting in Greater Nashua - continued
Page 8	– Map to Trinity Lutheran Church Chelmsford, MA

**MMNE Activities update – Joe Mulvey, President****2009 Symposium**

Mike Swanson had discussed Laszlo Horvath as our 2009 Symposium Presenter. He is the author of several works on alkaline intrusives including the "Mineralogical Record, Mont Saint-Hilaire edition", and "Mineralogy of the Saint-Amable sill, Varennes".

I think this is a great idea; we should pursue this as soon as possible. We should also determine the date and locality so that we may put a club advertisement into the EFMLS Newsletter, Mineral News, Rocks & Minerals and the Mineralogical Record as well as all the other mineral clubs around New England.

**Board**

With the absence of a second Club Director due to Merri Porro's sudden passing, I think that it is appropriate to leave the position vacant in her memory for this year. What will truly be a hard slot to fill will be the pastry-void. If anyone would like to bring food or drink to any or all of the club meetings, you are encouraged to do so.

**Donation from Claire**

Over the summer I was contacted by a woman named Claire whose mother passed away suddenly. She lived in Connecticut, and although not a member of any micromounting club, certainly specialized in micros of Connecticut. She wanted to donate to an organization and called me after seeing the MMNE website. I could only make one trip down and there was certainly enough good material to fill 3 or 4 pickup trucks.

Much of what I picked up is from quarries and road-cuts in Connecticut; there are also a few flats of material from a trip she took to Colorado and Nevada. With the load that I took, I literally doubled the size of our giveaways! I am now faced with the decision each month of what to bring (there are tough decisions and then there are easy ones).

I do encourage you to take the giveaway material. Much is very good and there is just too much to cart back and forth every month – especially when gas costs so much!

**Club By Laws**

During last years' meetings it was continually mentioned that the Club By-Laws need to be reviewed. The problem was that nobody seemed to have a recent copy. Thanks to Anna and Bob Wilkens, a copy was located which was finally typed into a computer. An electronic copy was emailed over the summer to those members of the board with email accounts and initial revisions were suggested. I expect we will complete this review before the end of the year and the 2008-2009 version will be then published in our newsletter.

**EFMLS**

Anna Wilkens always gives me the EFMLS newsletter at meetings. Just after the symposium, in reviewing the current copy, I noticed a list of videos maintained by their organization and contacted them. With great excitement I tell you that we can borrow videos mostly on DVD for club presentations. They sent me four DVDs over the summer, a Rochester Symposium presentation on the Legenbach Quarry, an Intro to Mineral Identification and two Mont St. Hilaire shows. These are about 45 minutes to an hour in length. I copied all four and propose that we can view one each meeting.

Continued next page

**MMNE Activities update – continued****Club Holdings**

At the May symposium Pat Barker made an extraordinary club donation when she gave us a Bausch & Lomb trinocular microscope, light, slide camera with mount and adapters. Thank you, Pat!



Pat Barker at the 2008 Symposium

The ensuing discussion revealed that past donations from other members to the club were missing. I am doubtful that these items disappeared due to nefarious intentions, it is more than likely that technology left some things in the dust, age and equipment failure took its toll on others, and there may be items still socked away in member basements forgotten for many years. My proposal as president is to list club inventory once a year in the club newsletter. This way we can always compare what we have with previous lists. If members agree, we may want to add this to the by laws as well.

**Membership**

Since most members of the Micromounters are members in good standing of other locality specific clubs, I'd like to encourage you to get the word out about the MMNE. We are a niche that doesn't compete with the goals of other mineral clubs. It would be nice to get some new members, especially those that may offer to write an article or share some photos for the newsletter!

**First Annual Members Only Friendly Micromounting Competition**

I have seen in the newsletters, websites and old articles of other micromineral clubs that a frequent highlight was their mounting competition. If there is interest, I propose that we have our own Members Only mounting challenge. If we can agree on five criteria for judging, we can create Olympic style scoring cards. The mounts could be anonymous until the judging is revealed, first prize would be the envy of your peers, mention in the newsletter and your photo on the MMNE website. Any interest?

**Website Monthly Increase**

Beginning with the billing date on or after October 1, 2008, the monthly cost of web hosting and name service will increase from \$11.95 to \$12.95 per month.

**MMNE web site statistics**

	<b>All of 2007</b>	<b>Jan-Aug 2008</b>
<b>Hits</b>		
<b>Total Hits</b>	73436	77587
<b>Avg Hits per Day</b>	200	317
<b>Avg Hits per Visitor</b>	4.59	6.09
<b>Page Views</b>		
<b>Total Page Views</b>	16458	15067
<b>Avg Page Views per Day</b>	42	61
<b>Avg Page Views per Visitor</b>	0.97	1.18
<b>Visitors</b>		
<b>Total Visitors</b>	16002	12745
<b>Avg Visitors per Day</b>	43	52
<b>Bandwidth</b>		
<b>Total</b>	7.13 gb	5.97 gb
<b>Avg per Day</b>	19.95 mb	25.04 mb
<b>Avg per Visitor</b>	467.33 kb	490.83 kb

Comparing all of 2007 to the 3 quarters of 2008, our website is on par for total visitors, however, they are staying on the site longer, downloading and reviewing more files, and in some cases, hopefully discovering the club for the first time. I anticipate that once September rolls in, we will have higher than the average 1000 visitors per month and thus will surpass most of our complete 2007 years statistics by 5 – 7%.

-----

**Fall 2008 Mineral Shows**

September 27, 28. Capital Mineral Club, Concord, NH  
 Everett Arena, 15 Loudon Rd. (Exit 14, I 93)

[www.Capitalmineralclub.org](http://www.Capitalmineralclub.org)

September 27, 28. Franklin-Sterling Hill  
 Franklin School, Washington Ave., Franklin, NJ

[www.franklinmineralmuseum.com](http://www.franklinmineralmuseum.com)

October 18, 19. Bristol Gem and Mineral Club, Bristol, CT  
 Beals Community Center, 240 Stafford Ave.

[www.Bristolgem.org](http://www.Bristolgem.org)

October 25, 26. Rhode Island Mineral Hunters  
 Community College of RI, Rt. 113 East Ave, Warwick, RI

[earthwerks@cox.net](mailto:earthwerks@cox.net)

November 1,2. Stamford, CT Mineral Club  
 Eastern Greenwich Civic Center, 90 Harding Rd, Old Greenwich, CT

## Micro-mineral Collecting in the Greater Nashua, NH Area

Tom Mortimer

On the last Sunday afternoon of August, I ventured out to do some local mineral collecting.

In these days of \$4 dollar-a-gallon gasoline, staying in one's own backyard is becoming more attractive! The south central region of New Hampshire possesses few bonafide mineral collecting sites. However, a diligent collector, especially a micro-mineral collector, can frequently be rewarded in this area.

The Ground Round restaurant, that occupied the corner of Exit 8 and Amherst St. in Nashua, was recently raised to make way for a new four story hotel. A ledge at the rear of the lot was blasted as part of the site preparation. Driving by on Amherst Street, this ledge appeared to be the same rock type as present at Mine Falls Park, Nashua, and at the Audley Quarry in Merrimack. Both of these sites have produced nice micro Anatase and Brookite in recent years. These minerals are found in very thin quartz crystal lined seams in the local country rock. This new construction site is on a line midway between Mine Falls Park and the Audley Quarry. During a half-hour visit to this Exit 8 ledge area, I selected about five pounds of rock with thin quartz seams evident. The fine powder limonite that frequently fills these seams makes it impossible to spot the 0.5 to 2mm micro anatase crystals in the field. The success, or failure, of my effort would have to wait until I returned home.

Next, I moved on to a spot on Rt. 3 in Merrimack, across from the BAE plant. A few months ago I had noticed a pile of rock that appeared to have come from the Audley Quarry, (a couple of miles further north). I collected several pounds here also. I again selected thin quartz seam pieces, plus some chunks that appeared to have feldspar and calcite with voids. I noticed a (hidden) steep talus of about a half an acre size, downhill to the east of the rock piles, (a future visit?). Apparently this site was being backfilled for some time.

My next stop was the entrance to the Audley Quarry. This quarry remains heavily posted. I was fortunate to have collected here during its first two years of operation, when it was neither posted nor gated.

Finally, I returned for a look at the (Rt. 93) Exit 10 road cut, (the "Merrimack Industrial Interchange"). This is a very large, steep walled, road cut from which I had collected prehnite and zeolite minerals during (and shortly after) the cut blasting. I wanted to see if any of these minerals could still be collected here. The prehnite occurs as green, lustrous, botryoidal, euhedral, groups to about one inch in gas bubble voids in a basalt dike. By New Jersey or Connecticut standards, the prehnite here is not notable, but for New Hampshire, it is as good as I have seen. Yes, the dike is still discernable, and the prehnite is still collectable, (with difficulty). While examining the road cut face I came across a seam that had a few, small, clear crystals exposed. I thought they might pop off if I tried to collect them, but I gave it a shot anyway. I managed to get two pieces with the crystals still attached.

So, what did I find?

From the Ground Round, Exit 8 site, I found just ONE half-dollar sized piece with micro anatase, (in the five pounds I brought home). This piece contained about a dozen ½ to 1 mm pale brown to clear anatase crystals on a matrix of micro quartz crystals. The clear anatase can be difficult of spot to the inexperienced eye. Their shape, high luster, and horizontal striations aid in picking them out in a background field of clear micro quartz crystals. The Ground Round site also yielded a couple of small plates of milk white micro adularia, (orthoclase), crystals.

From the Rt. 3 Merrimack site I obtained ONE specimen of a weathering calcite seam with some very sharp, water-clear, prismatic, stilbite crystals. Stilbite of similar habitat occurs at Mine Falls Park. These crystals are about 1 mm in length. Also found in this rock dump was an interesting, pale green, vermiform mica group mineral.



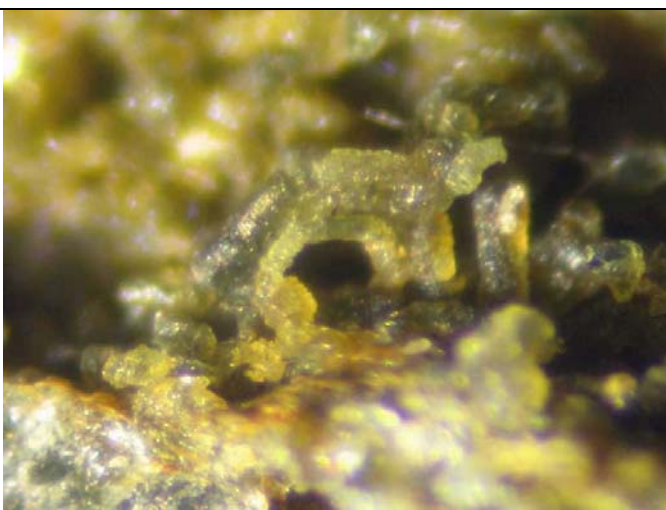
**Micro-mineral Collecting in the Greater Nashua Area - continued**

A quick look under the scope at the clear crystals from the Exit 10 site revealed them to be Fluorite octahedrons. I had not observed fluorite from this road cut previously. This is only the second occurrence of Fluorite I have seen from Hillsboro County, NH, (the other being non-euhedral crystalline blebs from the Rt. 101 – 101A interchange in Amherst/Milford). I cleaned these fluorites first with muriatic acid, and then followed with a soaking in bleach to remove organic stains. The fluorite octahedrons are clear, lustrous, with a slight blue tinge. They fluoresce blue white under UV light.

Below are some photos of my finds. I would have liked to include a photo of the Stilbite specimen, but despite many tries, I could not get a satisfactory image of the clear stilbite crystals on the milky calcite background.



**Fluorite.** Largest crystal 3 mm  
Rt. 93 Exit 10 Merrimack Industrial Interchange,  
Merrimack, NH



**Vermiform mica group mineral,**  
2 mm FOV  
Rt. 3 Merrimack, NH



**Anatase,** 2 xls. Larger, red arrow, 0.8 mm.  
Exit 8 – Amherst St. Nashua, NH



**Orthoclase var Adularia,** Crystals to 3 mm  
Exit 8 – Amherst St. Nashua, NH

